

Can you help spot **WATER POLLUTION?**



Sewage pollution is milky grey and often has an unpleasant smell



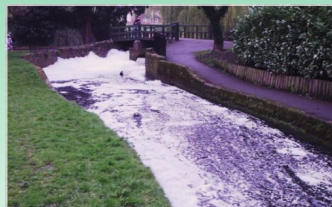
Silt pollution appears brown and turbid



Mine water pollution is bright and often orange in colour



Fly tipping waste in rivers



Detergent foam is bright white and smells perfumed or soapy



Oil pollution creates a black rainbow sheen on the surface

If you spot pollution please call the Environment Agency Hotline

0800 80 70 60

(24 hr service)

BRISTOL
2015 EUROPEAN
GREEN CAPITAL



Can you help prevent
WATER POLLUTION?



FOG off!

Fat, Oil and Grease (FOG) blocks sewers, causing raw sewage to overflow in to rivers and the sea.

✓ *Put fat and grease in food waste when cool*



Don't Flush...

Cotton buds, condoms, sanitary products and baby wipes (even the flushable kind) can block sewers and harm rivers.

✓ *Bag and bin waste.*



Only rain down the drain

Road drains connect directly to the river; please don't pour oil, paint, detergent, pesticides or anything other than clean water down the drain.

✓ *Take leftover products to your local recycling centre.*



Go Eco-friendly

Low phosphate eco-friendly cleaning products are much better for fish and wildlife.

✓ *Use eco-friendly detergents and only use the recommended amount.*

BRISTOL
 2015 EUROPEAN GREEN CAPITAL


BART
 bristol avon rivers trust